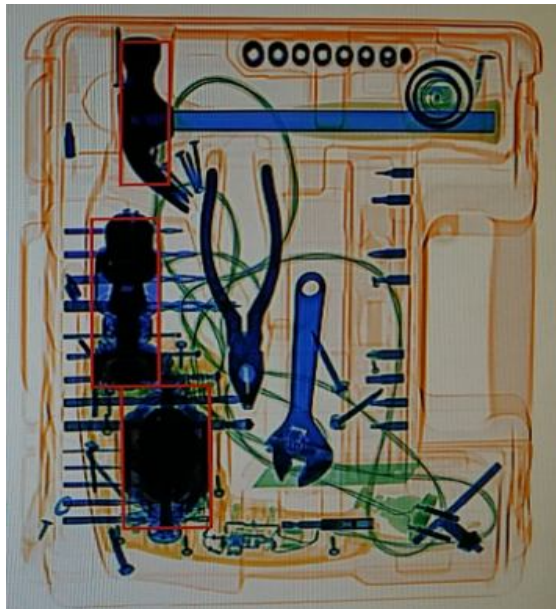
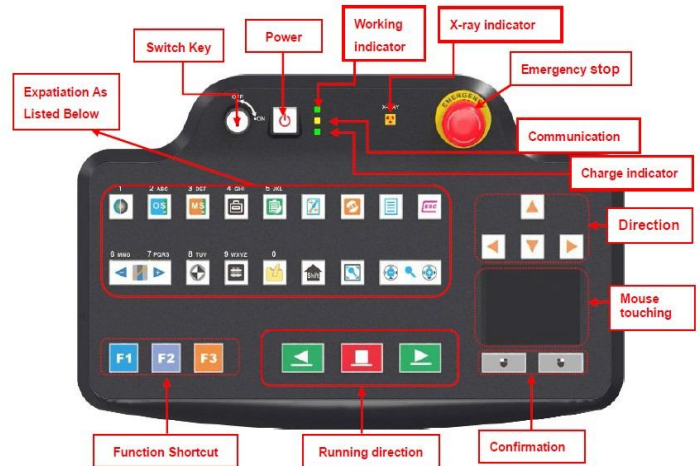




Model: 8065



High resolution image



Friendly operation keyboard

◆ **General Specification :**

**Dimensions (L×W×H) :**2848.5mm x1095mm x1535.5 mm  
**Device Weight:** 640KGS  
**Tunnel Size:** 810mm×655mm  
**Conveyor Speed:** 0.2m/s  
**Conveyor height :** 338.5mm  
**Conveyor Max Load:**200kg  
**Wire Resolution:**38AWG  
**Penetration:** 34 mm steel  
**Film Safety :**Guarantee ASA/ISO1600 Film  
**X-ray Leakage:** <1 μSv/h (at a distance of 5cm From external housing)

◆ **Image System :**

**Technical Principle:** Dual-energy X-ray Imaging;  
**X-ray Sensor:** L-Shaped Photodiode Array (**multi-energetic**) , 16bit Deep  
**Monitor:** High Resolution Color, LCD Accord, 17inch  
**Image Display:** High resolution of 1024 \* 1280 pixel; Image Grey Level: 65536  
**Image Enhancement:** 1-64times enlargement continuity, Color/BW, negative, high/low penetration, organic /inorganic Stripping, general enhancement, and pseudo color, etc.  
**Image Recall:** 30 images recallable, retrieval.  
**Explosives & Narcotics Detection:** Explosives & narcotics alarm and highlight according to atomic number signature  
**High Density Region Alarm:** Impenetrable region alarm and highlight, for possible concealing of threats and contrabands  
**Threat Image Projection:** Inserting fictional, but realistic images of threat items into baggage during screening operation, for maintenance of vigilance, as well as training and assessment of image identification capability  
**Image Archive:** Up to 50,000 images stored automatically, enable transferring to USB disk, and converting to XF、PNG、BMP、JPEG、TIFF、GIF etc formats  
**Miscellaneous Functions :** Time/date display, counters, user management, system-on/X-ray-on timers, power on self test, built-in diagnostic facilities, dual-direction scanning, system log, system standby and stimulant training, ADS etc.  
**Network Applications:** Multiple remote applications available based on Ethernet LAN and windows platform, such as image centralized storage and identify, recheck workstation, and network TIP, etc ( Optional) .  
**Images process:** 24bit real time processing ,4colors analysis, Images displayed marked date and ID NO ,Count the number of bags ,Memory gray level:65536  
**Software password protection :** All software features of machine are online and password Protected and all software features are controlled from key board of machine only  
**Online recording facility :** The machine has online recording facility and images can be transferred to external storage device through USB port.  
**Through put :** 720 bags per hour for hand and checked baggage

◆ **Operating Environment:**

**Operation temperature/Humidity:** 0°C-40°C/0%-95 %( non-condensing)  
**Storage Temperature/Humidity:** -20°Cto 60°C/ 0%-95 %( non-condensing)  
**Operation Power:** 187~240VAC, 50/60Hz (Optional: 100VAC, 110VAC, 120VAC, 200VAC)

**Power Consumption:** 1.0KVA  
**Noise:** <58db

◆ **Computer Character:**

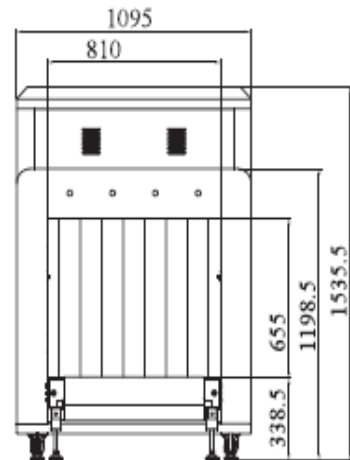
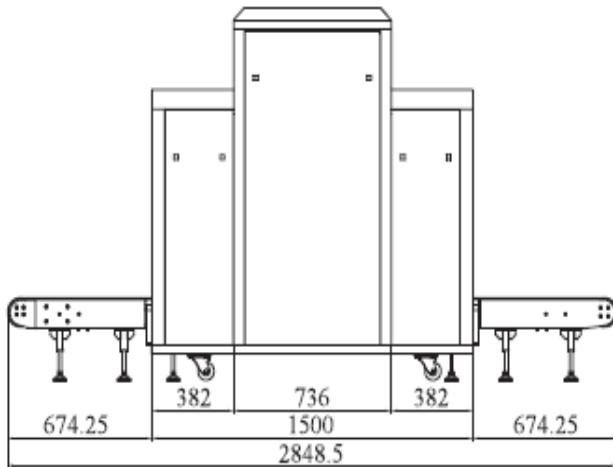
**CPU:** Inter (R), 2.60-2.70GHz  
**Storage:** 2GB 1600MHz DDR3  
**Hard Disk:** 500G  
**Computer system:** Windows XP  
**Monitor:** 2x17" LED, monitors, resolution : 1280x1024

◆ **X-ray Generator:**

**X ray generator Voltage:** 160KV  
**Generator tube current:** 0.2-1.2mA (adjustable)  
**Generator angle:** 80 degree  
**Generator Brand:** Spellman (USA brand)  
**Beam direction:** diagonal downward

◆ **Other Characters:**

**Cooling / Duty Cycle:** 100% No warm up (Oil Cooling)  
**Detect PCB board:** UK brand Senstech  
**Extension Rollers:** customize size length  
**UPS:** 15mins, 30mins, 60mins etc, optional



**Certificates:** ☆ISO19001 ☆ISO14001 ☆OHSMS18001 ☆CE ☆FDA ☆Health Inspection Report  
 ☆Computer Software Copyright Registration Certificate ☆Software Product Registration Certificate  
 ☆ Certificate from Ministry of Public Security ☆Safety and Police Electronic Products Quality Inspection Center  
 ☆Patent No. : 201020700245.2 ☆Patent No. :201020700245.8 ☆Patent No. : 201020700256.0